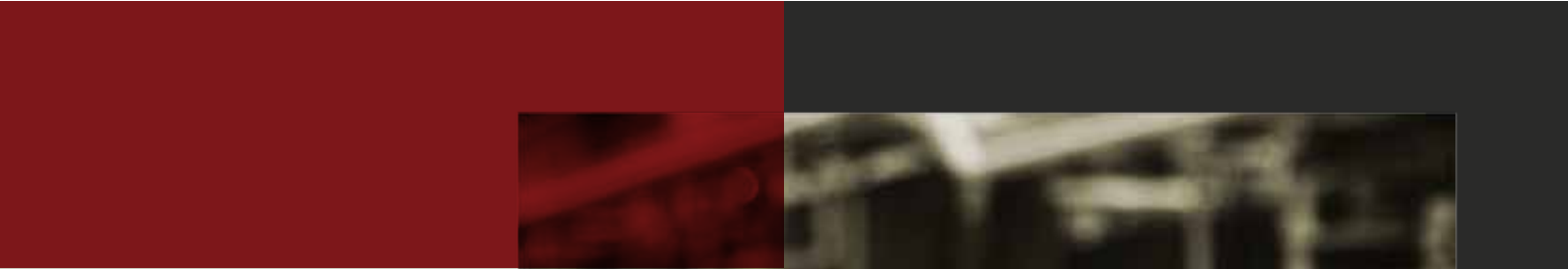


MIAMI-DADE COUNTY
APPROVED

tettogres
ceramic roof tiles



www.tettogresusa.com



SPANISH-S

GLOSS

Tetogres Gloss Tiles deliver contemporary style. The tiles unite satin-sheen elegance with the benefits of a self cleaning roof, and the promise of a lifetime of beauty.



GRAPHITE



CARAMEL



WHITE



GRAY



IVORY



DARK RED



MESCLADA

SPANISH-S TECHNICAL SPECS

Tile Length (in.): 16.92

Tile Width (in.): 10.62

Tile Height(in.): 1.96

Tile Weight (lbs): 5.62

Pieces/Square: 116

MIAMI-DADE COUNTY

APPROVED

NOA 13-0529.29



MATTE

Tettogres Matte & Antiqua tiles bring old world beauty within reach. These tiles share the essence of colonial life and offer a perfect bond of tradition and technology.



ANTIQUA



MATTE&ANTIQUA BLEND

KEY BENEFITS



LOWER WEIGHT PER SQUARE



TRACEABILITY



EASY INSTALLATION



THERMAL COMFORT



CRACKING & FADING RESISTANCE



PHYSICAL DURABILITY



HIGH IMPERMEABILITY



TECHNICAL ASSISTANCE



EASY MAINTENANCE



SALINITY RESISTANCE

ACCESSORIES



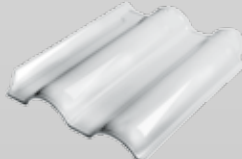
GLASS TILE SPANISH-S



RIDGE



RAKE



GLASS TILE DOUBLE-S



3-WAY APEX



HIP STARTER



DOUBLE-S RAKE



ROOF PITCH AND ANGLE CHART



ROOF PITCH	ROOF ANGLE	5.0'	10.0'	15.0'	20.0'	25.0'	30.0'	Multiplication
12/12	45.0°	7.1	14.1	21.2	28.3	35.4	35.4	1.414
11/12	42.5°	6.8	13.6	20.4	27.1	33.9	33.9	1.357
10/12	39.8°	6.5	13.0	19.5	26.0	32.6	32.6	1.302
9/12	36.9°	6.3	12.5	18.8	25.0	31.3	31.3	1.250
8/12	33.7°	6.0	12.0	18.0	24.0	30.1	30.1	1.202
7/12	30.3°	5.8	11.6	17.4	23.2	29.0	29.0	1.158
6/12	26.6°	5.6	11.2	16.8	22.4	28.0	28.0	1.118

Tettogres Tiles are manufactured using a high technology called SemiGres. SemiGres leverages many aspects of traditional ceramic tile manufacturing, and brings new advances to enable the following advantages:
 Low water absorption, enhanced physical strength, increased insulating capacity and lifetime finish.



2100 NW 129th Ave
 Miami, FL 33182 - Phone (561) 870-0013
info@tettogresUSA.com

See the warranty certificate for more information about the product. The information enclosed is as accurate as possible. Weights and colors might vary slightly due to the physical variations of the product. The colors shown are as similar as possible within print limits.